



UBC Utilities Invoice - Terms

Collection Period

The collection period reflects the period of time (months) that your strata's water usage is measured.

Effective Date

Metro Vancouver's rates are established at the beginning of each calendar year. If the collection period of your strata's bill 'straddles' both late 2010 and early 2011, there will be two different rates applied to your bill: one for the rate period that ends December 31st, and one starting January 1st 2011 for the 'new' rate period. The *effective date* distinguishes between the 2010 rate period and the 2011 rate period.

Minimum Charge

All buildings are billed a minimum charge of \$25, or the cost of the actual water delivered, whichever is greater.

CF and CM

CF stands for cubic feet and CM stands for cubic meters. The water usage for the buildings is measured in cubic meters while the charges are applied in cubic feet.

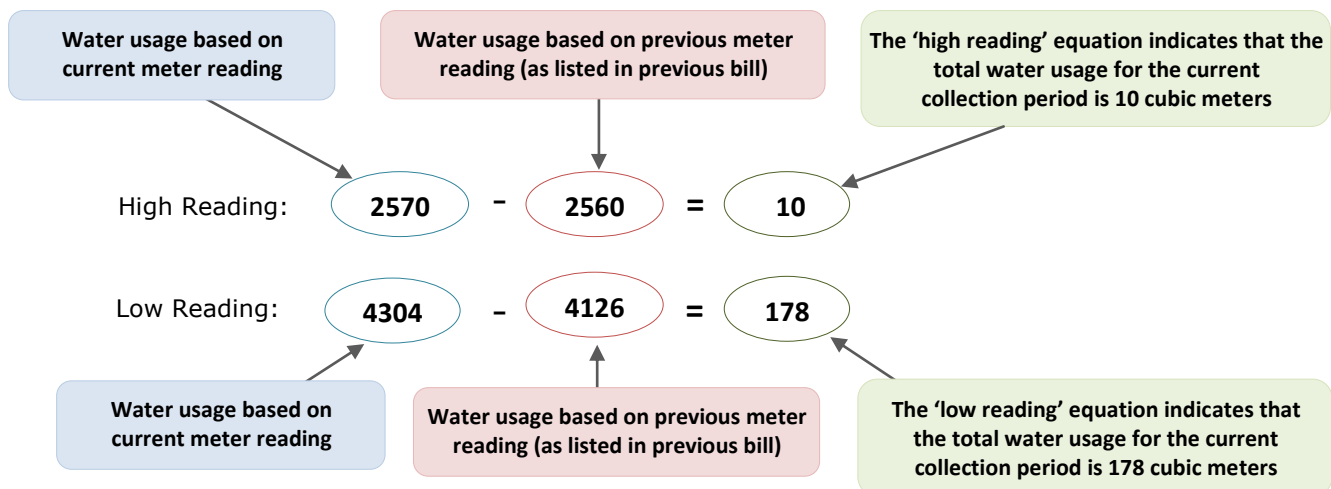
All Additional CF

This is the rate (cost) per cubic feet of water usage. This rate is adjusted during the summer months of June – September when Metro Vancouver adds a 25% premium to their base rate.

High Readings and Low Readings

Buildings with high water usage have one meter with two valves. The water flows primarily through the valve that is measured by the 'low reading'. When the water flow exceeds the capacity of the 'low reading' valve, it will then also flow through the secondary valve which is measured by the 'high reading'.

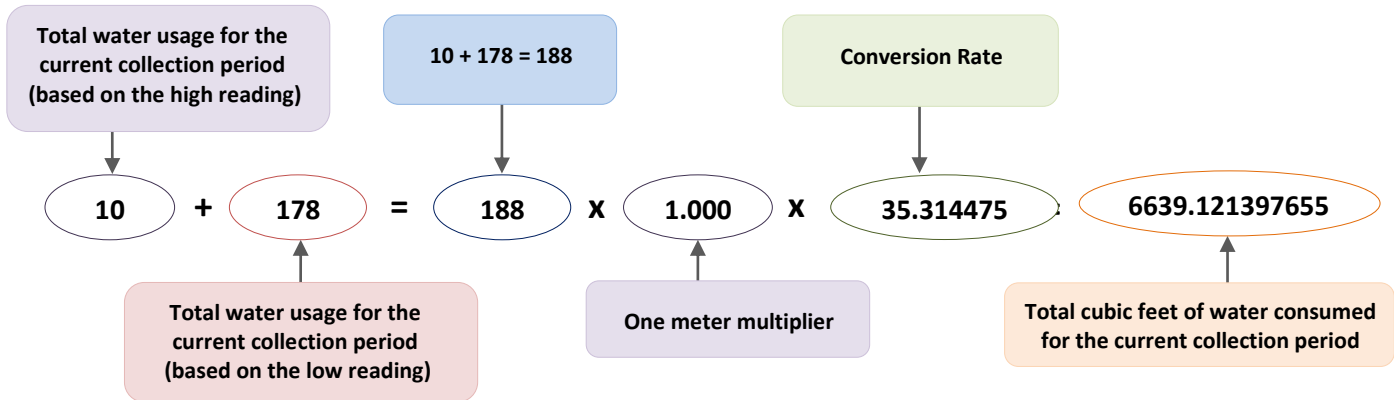
The high reading and low reading formulas subtract the measured meter reading from the past UBC Utilities bill, from the current meter reading. The sum of the high reading and low reading indicates the total water consumption (measured in cubic meters) for the current billing period.





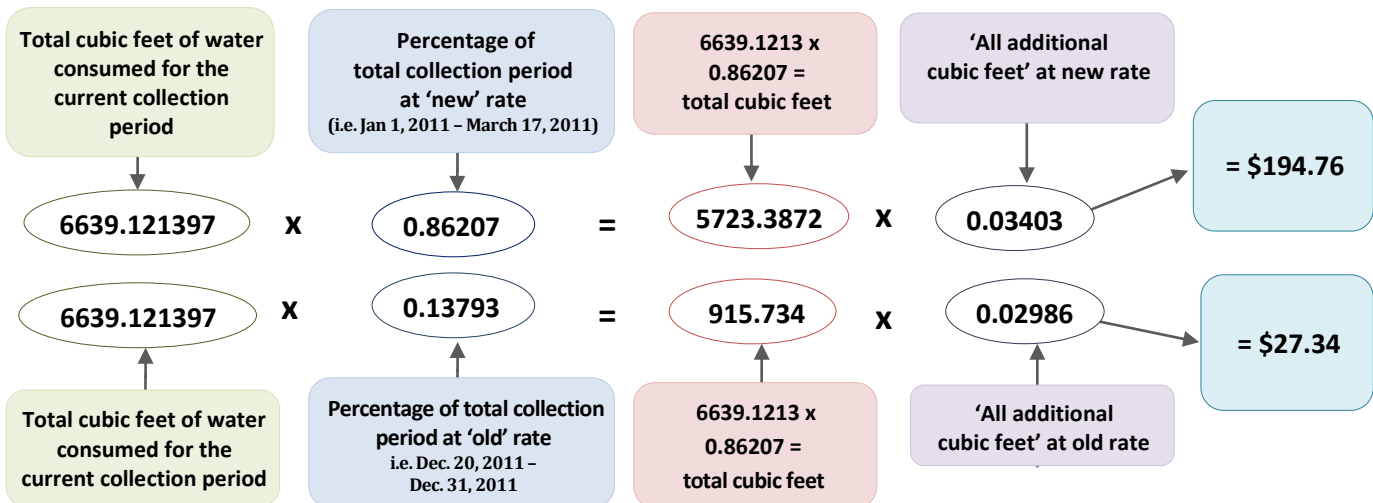
Total Consumption

The total cubic feet of water consumed for the entire bill. The rate is based on the formula that adds the 'low reading' total water usage (10 cubic meters) with the 'high reading' total water usage (178 cubic meters). The sum is 188 and this is multiplied by the meter multiplier (1.000 cubic meters) and then again by the conversion rate (cubic meters to -cubic feet - volume measure = 35.314475). The total cubic feet of water consumed is 6639.1213.



New Rate Ratio and Old Rate Ratio

The first number indicates the total consumption for the current collection period. The total consumption is multiplied by the percentage of the collection period which is being charged at the appropriate rate. The total number is then multiplied by the applicable 'All Additional CF' rate to determine the final dollar amount.



Meter Multiplier

Most of the water meters have a multiplier of 1.000 because water is measured in cubic meters. If your building has a multiplier other than 1.000 it is because your water is being measured in litres and therefore it is converted into cubic meters for billing purposes.