



WHAT IS THE UNA NOISE BYLAW?

The noise bylaw was developed to manage noise or sound within the UNA neighbourhoods so that every resident can enjoy the community. Approved in August 2012, the bylaw is a set of regulations that limits noise based on the source of the noise, the location, and the time of the day.

The UNA noise bylaw does not address noise levels within a strata property. If you have a concern about noise within your strata please speak with your strata manager.

This brochure provides an overview of the noise bylaw. Please visit the UNA website at www.myuna.ca to view the most current bylaw for more information on noise restrictions and bylaw enforcement.

WOOF! WOOF! WOOF! WOOF! WOO
BOOM! BOOM! BOOM! BOOM! BOO
SHHH! SHHH! SHHH! SHHH! SHHH

WHAT SHOULD I DO IF I HAVE A CONCERN ABOUT NOISE IN THE COMMUNITY?

- 1 Whenever reasonably possible you are encouraged to first speak with the person responsible for the noise and try to resolve the matter directly. If this is not possible or is unsuccessful, move to step 2.
- 2 You should speak with the property or strata manager of the location where the noise is coming from so that they can try to resolve the matter. If the noise concern is still not resolved, move to step 3.
- 3 You may contact the UNA to investigate your concern.

University Neighbourhoods Association
#202 – 5923 Berton Avenue
Vancouver, British Columbia V6S 0B3
T: 604.827.5158
E: reception@myuna.ca
www.myuna.ca

Contact the RCMP for noises that may involve an immediate threat to person or property (such as gunshots, screaming and alarms) and loud parties.

UBC RCMP Detachment
2990 Wesbrook Mall
Vancouver, British Columbia V6T 2B7
T: 604.224.1322

ABOUT THE UNA

The University Neighbourhoods Association (UNA) acts a municipal council for the residential areas on campus, promoting a vibrant, sociable, safe and diverse community at the University of British Columbia (UBC).



WOOF! WOOF! WOOF! WOOF! WOO
BOOM! BOOM! BOOM! BOOM! BOO
SHHH! SHHH! SHHH! SHHH! SHHH

BAAM! BAAM! BAAM! BAAM! BAAI

WOOF! WOO

BOOM! BOO

SHHH! SHH

BAAM! BAA

WOOF! WOO

BOOM! BOO

SHHH! SHH

BAAM! BAA

WOOF! WOO

BOOM! BOO

SHHH! SHH

BAAM! BAA

WOOF! WOO

BOOM! BOO

SHHH! SHH

BAAM! BAAM! BAAM! BAAM! BAAI

WOOF! WOOF! WOOF! WOOF! WOO

BOOM! BOOM! BOOM! BOOM! BOO

SHHH! SHHH! SHHH! S

BAAM! BAAM! BAAM!

WOOF! WOOF! WOOF!



GOOD NEIGHBOUR'S GUIDE TO THE UNA NOISE BYLAW



WHAT IS AN ACCEPTABLE NOISE LEVEL?

In general, ordinary and usual sounds that do not unreasonably disturb another person is acceptable noise. Some of the specific rules in the bylaw are listed below.

RESIDENTIAL NOISE (CONTINUOUS)

Levels shall not exceed:

- **55 dB** on weekdays from 7 a.m. to 10 p.m.
- **55 dB** on Saturdays, Sundays, and holidays from 10 a.m. to 10 p.m.
- **45 dB** at all other times

COMMERCIAL NOISE (CONTINUOUS)

Levels shall not exceed:

- **70 dB** on weekdays from 7 a.m. to 10 p.m.
- **70 dB** on Saturdays, Sundays, and holidays from 10 a.m. to 10 p.m.
- **65 dB** at all other times

CONSTRUCTION NOISE OR CONSTRUCTION RELATED ACTIVITIES:

Levels shall not exceed:

- **85 dB** on weekdays from 7:30 a.m. to 7 p.m. and Saturdays from 9 a.m. to 5 p.m.
- Not permitted at any other time

POWER EQUIPMENT NOISE:

Levels shall not exceed:

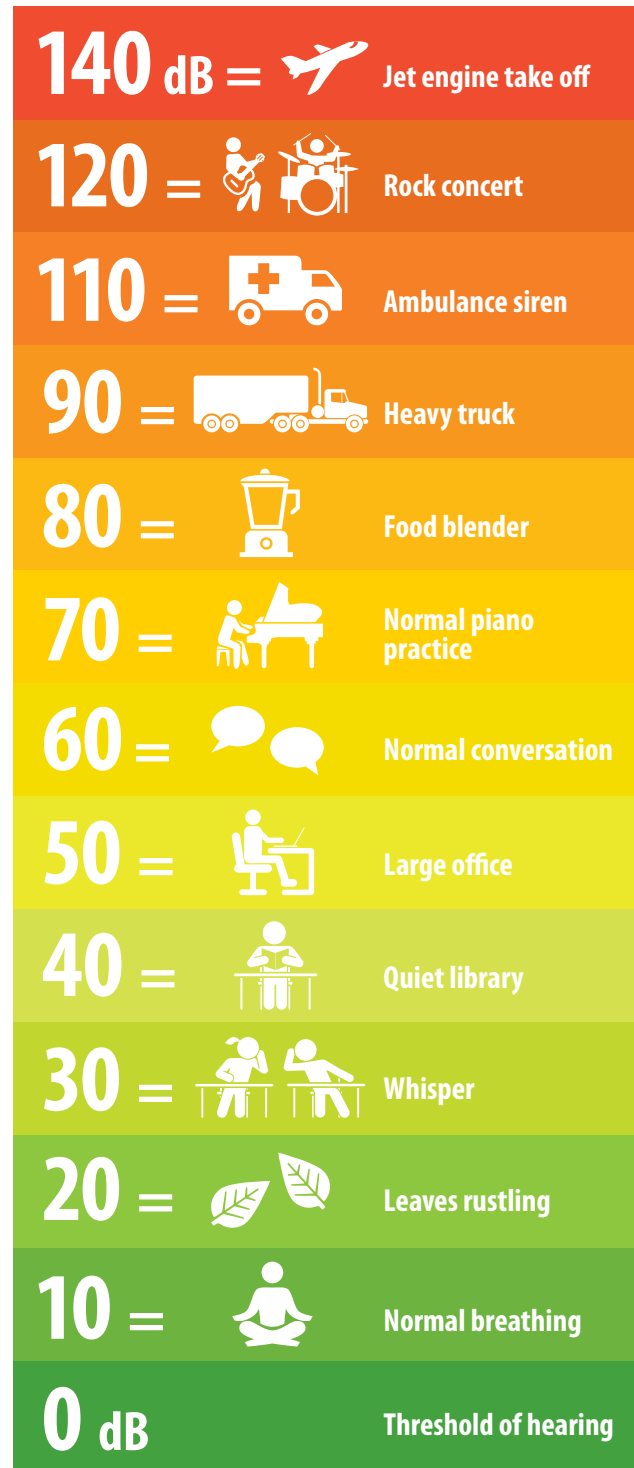
- **77 dB** on weekdays from 8 a.m. to 6 p.m. and Saturdays from 10 a.m. to 5 p.m.
- Not permitted at any other time

REFUSE COLLECTION NOISE:

- Residential refuse collection may only occur on weekdays from 8 a.m. to 6 p.m.
- Commercial refuse collection may only occur on weekdays from 8 a.m. to 10 p.m.

* Rules refer to noise level limits as heard from outside the property where the noise is coming from.

DECIBEL SCALE



WHAT ARE THE COMMONLY USED TERMS?

Continuous noise: Noise occurring for more than 3 minutes in a 15 minute time period.

Decibels (dB): A unit of measurement used to express sound pressure levels.

Power equipment: Any electric or fuel powered equipment or machinery used in lawn or garden care or in building or property maintenance. Some examples include leaf blowers, lawn mowers, pressure washers, and hand-operated power tools.

ARE THERE ANY EXCEPTIONS TO THE BYLAW?

Yes, some sounds or noises are not restricted by the noise bylaw, including:

- Church bells
- Fire engine, police and ambulance sirens
- Emergency construction, cleaning or maintenance of a building or public utility, such as a street, sewer, water main or electrical duct.

Additionally, the UNA may issue noise bylaw exemptions for special events as well as construction, cleaning or maintenance that cannot reasonably comply with bylaw restrictions.

WHAT HAPPENS AFTER THE UNA RECEIVES A COMPLAINT?

The UNA's approach to bylaws enforcement is to inform, promote voluntary compliance, and provide opportunities for collaborative problem solving. If the issue cannot be resolved through these means a fine may be issued.