

---

# UNA Guidebook

---



UNIVERSITY  
NEIGHBOURHOODS  
ASSOCIATION

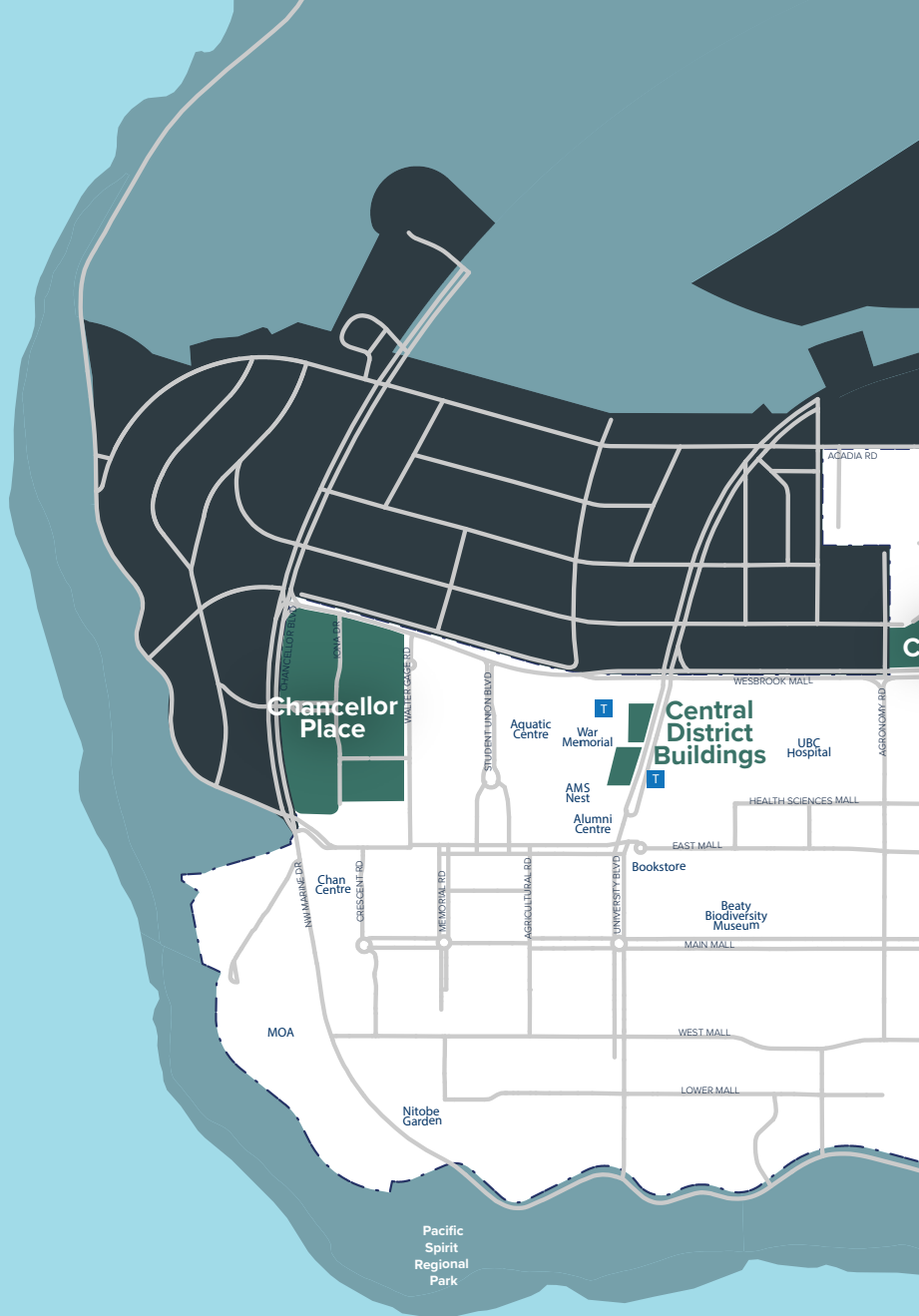
UPDATED: MARCH 2025





## TABLE OF CONTENTS

2	Neighbourhoods Map
4	Message from the Chair
5	About the UNA
6	Governance
8	Facilities, Fields and Parks
10	UNA Account
12	Services
20	Recreation
23	Find Information
24	Volunteering and Community Grants
26	Directory







University  
Endowment  
Lands

Pacific  
Spirit  
Regional  
Park

Hampton  
Place

Wesbrook  
Place

TRIUMF

East  
Campus

OSOYOOS CRES

WESBROOK MALL

Doug  
Mitchell  
Centre

Thunderbird  
Park

Tennis  
Centre

EAST MALL

UBC Farm

Hawthorn  
Place

Thunderbird  
Stadium

STADIUMED

WESTERN AVE

SW MARINE DR

UBC  
Botanical  
Garden



## MESSAGE FROM THE CHAIR

Welcome to the UNA community!

The University Neighbourhoods Association (UNA) is proud to serve the residents of Chancellor Place, East Campus, Hampton Place, Hawthorn Place, Wesbrook Place, and Central and Focal Buildings. Whether you are a long-time resident or new to the area, the **UNA Guidebook** is your resource for discovering the many services, facilities, and programs available to you.



Our goal is to enhance the quality of life for all residents by fostering a sense of belonging and providing opportunities to connect, learn, and thrive. From parks and recreational facilities to community events and local initiatives, the UNA is here to support you.

Your involvement helps shape our community and ensures it remains a welcoming and vibrant place for all — we invite you to attend events, volunteer, or participate in Board and Annual General Meetings. If you have any questions or ideas, our team is always happy to hear from you.

Thank you for being part of our neighbourhoods. Welcome home!

A handwritten signature in black ink that reads "Eagle Glassheim". The signature is fluid and cursive, with a long horizontal stroke extending to the right.

**Eagle Glassheim**

Chair, UNA Board of Directors

## ABOUT THE UNA

The UNA is a society. Its mandate is to promote the development of good neighbourhoods and to provide, operate and maintain services and facilities on behalf of residents.

It manages infrastructure, such as community centres, parks, roads, sidewalks and regulates matters of concern in the public realm, such as parking and noise.

The full scope of its services is detailed in the ***Neighbours' Agreement*** with UBC.

Visit [myuna.ca](https://myuna.ca) for more information.





## GOVERNANCE

The UNA is governed by a Board of Directors. The Board oversees, develops policies and sets out the strategic priorities of the society. The Board is composed of seven directors who are elected for a three-year term. Two UBC-appointed observer-participants and one AMS-appointed observer-participant are allowed to attend and participate in Board meetings.

UNA Board of Directors meetings are held on the third Tuesday of each month (subject to mitigating factors). Residents are invited to attend all open sessions. For the schedule and agenda, visit [myuna.ca/board-meetings](https://myuna.ca/board-meetings).

## UNA Society Membership

In order to vote or run during UNA Board of Directors elections and to attend the general meetings, one must sign up to become a member of the UNA society. To be eligible, a person must be 18 years old or older and reside in Chancellor Place, East Campus, Hampton Place, Hawthorn Place, Wesbrook Place, Central Building or Focal Building.

To learn more about how to sign up for a UNA Society Membership, visit [myuna.ca/society](https://myuna.ca/society). Please note that a **UNA Society Membership** is not the same as signing up for a **UNA Account** or **UNA Card**. More information on UNA Accounts and UNA Cards can be found on page 10.

## Bylaws and Constitution

The UNA Bylaws and Constitution set out the rules and purposes of the society. The Bylaws and Constitution are available on the UNA website at [myuna.ca/bylaw-constitution](https://myuna.ca/bylaw-constitution).

## Strategic Plan

The UNA Board of Directors and senior management work together to develop a strategic plan to set out the society's priorities. The full **UNA Strategic Plan** is available on the UNA website at [myuna.ca/strategic-plan](https://myuna.ca/strategic-plan).



## FACILITIES, FIELDS AND PARKS

### UNA Main Office

The UNA Main Office houses the office of the Chief Administrative Officer and the offices of the administrative staff. To meet with staff who work in the UNA Main Office, please email [reception@myuna.ca](mailto:reception@myuna.ca).



### Wesbrook Community Centre

The Wesbrook Community Centre is located in the heart of Wesbrook Place, adjacent to the secondary school. It provides an important community gathering place and is the venue for over 200 recreation programs and workshops offered each season. At 30,000 square feet, the Wesbrook Community Center is a stunning space which includes a fitness centre, a gymnasium, breakout spaces for clubs, music and dance, arts and culture events, and rooms for camps and activities for kids. Residents can also sign up for a UNA Account, avail of parking services and access the Green Depot recycling centre.





## Old Barn Community Centre

Located at Hawthorn Place, the Old Barn Community Centre provides a social, recreational and community gathering place for residents. The Old Barn Community Centre is located on a site that was previously occupied by the “Old Horse Barn” – an historic UBC building. This barn was demolished in September 2003 as a result of concerns for its structural integrity. Today, the Barn houses meeting rooms, social spaces, a fitness centre and a coffee shop.

## Outdoor Facilities

- UNA COMMUNITY FIELD
- UNA SPLASH PAD
- SKATE PARK
- COLLINGS FIELD AT NOBEL PARK
- COMMUNITY GARDENS

## Playgrounds

### Wesbrook Place

- KHORANA PARK PLAYGROUND
- MICHAEL SMITH PARK PLAYGROUND
- MUNDELL PARK PLAYGROUND
- NOBEL PARK PLAYGROUND

### Hawthorn Place

- EAGLES PARK PLAYGROUND
- JIM TAYLOR PARK PLAYGROUND
- LARKIN DRIVE PLAYGROUND

### East Campus

- EAST CAMPUS PLAYGROUND

### Chancellor Place

- IONA GREEN PARK PLAYGROUND
- ST. ANDREWS HALL PLAYGROUND

# UNA ACCOUNT

Your UNA Account is a centralized system for managing your and your family members' UNA services including: recreation programs, facility bookings, sustainability programs, parking services, volunteer initiatives, your UNA Society Membership and UNA Card. Sign up at one of our community centres or by visiting [myuna.ca/una-account](https://myuna.ca/una-account).



## UNA Society Membership

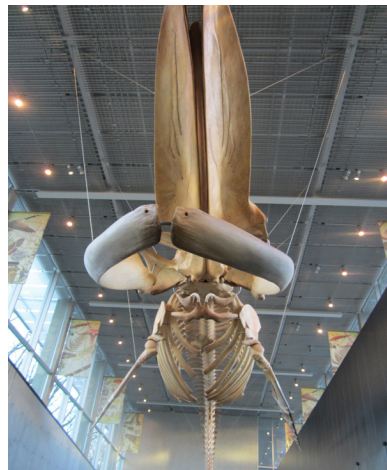
A UNA Society Membership entitles eligible residents to participate in general meetings, and to vote and run during Board of Director elections. You can manage your membership online through your UNA Account or in-person at any UNA community centre. Proof of address is required. For more information, please visit [myuna.ca/society](https://myuna.ca/society).

## UNA Card

A UNA Card gives UNA residents access to waived fees and/or reduced rates at various UBC recreation and cultural facilities, the Vancouver Public Library and UNA community centres (see list below). For a full list of benefits and how to get a card, visit [myuna.ca/card](https://myuna.ca/card).

## UNA Card Partner Facilities

- VANCOUVER PUBLIC LIBRARY
- UBC BEATY BIODIVERSITY MUSEUM
- UBC BOTANICAL GARDEN AND NITOBE MEMORIAL GARDEN
- MUSEUM OF ANTHROPOLOGY AT UBC
- UBC LIBRARY
- BIRDCOOP FITNESS CENTRE AT THE UBC STUDENT RECREATION CENTRE
- DOUG MITCHELL THUNDERBIRD SPORTS CENTRE
- UBC AQUATIC CENTRE
- UBC TENNIS CENTRE



UNA ACCOUNT



### Want More Discounts?

Free tickets and discounts to events at the Chan Centre for the Performing Arts, UBC School of Music, UBC Theatre & Film and by the UBC Thunderbirds are offered to residents occasionally through the **UNA Community Newsletter**. To subscribe, please visit [myuna.ca/subscribe](https://myuna.ca/subscribe).





## UNA SERVICES

### Parking

On-street parking permits are available to UNA residents of Wesbrook Place, Hampton Place and Hawthorne Place within their respective neighbourhoods. There are no parking permits for residents of Chancellor Place, East Campus, Central Building or Focal Building. Information on parking permits is available at [myuna.ca/parking](https://myuna.ca/parking).

### Road Works

The UNA manages the maintenance and repairs of streets and sidewalks within the local areas and coordinates with UBC, Metro Vancouver and the Ministry of Transportation and Infrastructure for any road works that may affect residents. Information regarding significant road works are distributed to Strata chairs and through the *UNA Community Newsletter* and website.

### The Green Depot

The Green Depot offers an easy and accessible way for UNA residents to responsibly dispose of a wide variety of waste not accepted by residential waste recycling services. Learn more at [myuna.ca/depot](https://myuna.ca/depot).





## Community Gardens

The UNA has five community gardens where residents can grow their own food, flowers and connect with the UNA community. Hawthorn Community Garden and Rhodo Community Garden are located at Hawthorn Place. Nobel Community Garden is in Wesbrook Place. New garden additions are located along Ross Drive near the UBC Farm. For more information about how to apply for a garden plot visit [myuna.ca/gardens](https://myuna.ca/gardens) or email [communitygardens@myuna.ca](mailto:communitygardens@myuna.ca).

## Electric Car Charging

There are two Level III electric vehicle charging stations located on Webber Lane across from the Wesbrook Community Centre. There are also EV charging stations throughout UBC parkades. More charging stations are currently in the process of being installed. More information about charging locations can be found at [parking.ubc.ca/are-there-electric-vehicle-ev-charging-stations-ubc](https://parking.ubc.ca/are-there-electric-vehicle-ev-charging-stations-ubc).







## Parks and Landscaping

The UNA operates and maintains infrastructures within its jurisdiction, including parks and sidewalks (a full list is outlined on Schedule D of the *Neighbours Agreement*). Currently, the UNA retains a service agreement with UBC Properties Trust which subcontract the maintenance and landscaping of these facilities to various contractors. The landscaping within a Strata's common property, is maintained by the Strata. For questions regarding parks and landscaping, please contact [operations@myuna.ca](mailto:operations@myuna.ca).

## Garbage Removal

The UNA looks after the removal of garbage from all outdoor waste receptacles within its jurisdiction. Garbage is picked-up on a weekly basis, except for high-traffic areas where it is removed more frequently. For residential garbage information, please get in touch with your building's Strata management team. For questions regarding garbage removal, please contact [operations@myuna.ca](mailto:operations@myuna.ca).

## Snow Removal

UNA snow removal crews work to ensure that residents can have access to key areas in the neighbourhoods after or during heavy snowfall. Visit the [myuna.ca/snow-removal](https://myuna.ca/snow-removal) for snow removal plans and updates on the status of our snow removal teams.

## Public Safety

The UNA is committed to helping facilitate public safety and emergency preparedness. In case of emergency or to report a crime, please call 9-1-1. The RCMP University Detachment can be contacted at 604.224.1322. Visit [myuna.ca/public-safety](https://myuna.ca/public-safety) to learn more.

## Child Care

The UNA, in partnership with UBC and the YMCA, provides child care with priority for families who do not work or study at UBC. This is intended to complement the services provided by UBC Child Care Services.



- **Wesbrook Child Care Centre** is located beside the Wesbrook Community Centre. The facility accommodates 49 child care spaces for infants, toddlers and preschool-aged children.
- **Vista Point Child Care** offers 25 spaces for children ages 30 months to five years and is located within the East Campus neighbourhood.
- **Before- and After-School Care Program** is offered at the Wesbrook Community Centre and Old Barn Community Centre. Priority is given to residents with no affiliation to UBC.

All child care services offered by the UNA are operated by the YMCA of Greater Vancouver. For more information, visit [myuna.ca/childcare](https://myuna.ca/childcare).







## Bookings and Rentals

Our community centres have a variety of indoor and outdoor facilities that are available for public bookings and events.

### Indoor Facilities and Rooms

The Wesbrook Community Centre is a modern space with rooms dedicated to accommodating meetings, small gatherings, large social events, and indoor sports.



- **ART ROOM**  
963 SQ.FT. / 47 PERSONS
- **BOARD ROOM**  
393 SQ.FT. / 20 PERSONS
- **MUSIC STUDIOS**  
258 SQ.FT. / 10 PERSONS
- **SOCIAL ROOM**  
882 SQ.FT. / 44 PERSONS
- **MULTIPURPOSE ROOM**  
904 SQ.FT. / 44 PERSONS
- **DANCE STUDIO**  
990 SQ.FT. / 20 PERSONS
- **GYMNASIUM**  
6931 SQ.FT. / 348 PERSONS



The Old Barn Community Centre offers a highly flexible social space within the Hawthorn Place neighbourhood: two meeting rooms or one large room.

- **MEETING ROOM 1**  
986 SQ.FT. / 49 PERSONS
- **MEETING ROOM 2**  
725 SQ.FT. / 40 PERSONS
- **BOTH MEETING ROOMS**  
1711 SQ.FT. TOTAL / 89 PERSONS  
STANDING CAPACITY, SEATING  
AVAILABLE FOR 60 PERSONS





## Outdoor Facilities

The UNA operates two outdoor fields that are available for private bookings. For more details on reservations, visit [myuna.ca/bookings](https://myuna.ca/bookings) or send an email to [bookings@myuna.ca](mailto:bookings@myuna.ca).

- **Collings Field at Nobel Park** is a softball diamond located at Nobel Park. The field was renovated and reopened in July 2021.
- **UNA Community Field** is a full-sized artificial turf soccer field. For more information, visit [myuna.ca/bookings](https://myuna.ca/bookings).





# UNA RECREATION

RECREATION

The UNA provides the community with access to a wide range of physical and wellness activities. The UNA stands by three Foundational Principles that guide the work that we do in all of our community centres and recreation services: fostering well-being, enriching experiences and building belonging. The UNA offers hundreds of recreation programs at the Wesbrook Community Centre and the Old Barn Community Centre every season and is committed to motivating community engagement and participation for all ages.



## Programs for Early Years

Our activities for preschoolers (ages 0-5) are designed to help toddlers strengthen their bodies and minds. All preschool programs and drop-in activities are led by professional instructors who maintain a strong community focus.

## Programs for Children & Youth

Our activities for children (ages 6-12) are focused on interaction, growth and play. All children's programs are led by professional instructors. Our activities for youth (ages 13-18) are centred around individual expression, leadership development and authentic friendship.

## Programs for Adults & Seniors

Adult programs support learning beyond the classroom. Participants can keep healthy, achieve fitness goals meet neighbours and build community at our community centres and fitness centres.



## Fitness Centres

Our fitness centres offer a range of cardio and resistance equipment along with qualified attendants and personal trainers committed to your health and well-being.



### Wesbrook Fitness Centre

The Wesbrook Fitness Centre is located on the top floor of the Wesbrook Community Centre. Its modern and open design adds a sense of freedom to any workout. Our fitness centre staff are happy to assist users of all fitness levels.

### Old Barn Fitness Centre

The Old Barn Fitness Centre is located on the ground floor of the Old Barn Community Centre. This fitness centre is ideal for users who prefer to exercise independently.

### Personal Training

Work out with a team that is professional, personal and ready to help. Our team of trainers can help you start, improve or refine your workout routine. Contact us to learn more about how personal training can help you meet your fitness goals. Check out the directory on page 24 for fitness centre contact details.





## FIND INFORMATION

### UNA Website

Visit the UNA website at [myuna.ca](https://myuna.ca) for more information about the UNA, to sign up for a UNA Account and to register for recreation programs.

### UNA Community Newsletter

The UNA distributes an email newsletter every Friday to inform the community of upcoming news, events, discounts, service changes and other important information. Subscribe to our newsletter to stay in the loop with what is happening in your community by visiting [myuna.ca/subscribe](https://myuna.ca/subscribe).



### Program Guide

The UNA publishes the *Program Guide* three times a year as a catalogue for over 200 recreational and educational programs, events and workshops that are offered at the Westbrook Community Centre and Old Barn Community Centre. New issues are published every Winter, Spring/Summer and Fall. Pick up a copy at any UNA facility or visit the UNA website for a downloadable PDF copy at [myuna.ca/programs](https://myuna.ca/programs).

### The Campus Resident

*The Campus Resident* community newspaper is your source for local news. The paper publishes online and in print every month (except August and January). Hard copies are delivered to mailboxes or find the latest issue online by visiting [thecampusresident.ca](https://thecampusresident.ca).

### Newcomers Support

The UNA offers social support programs, services, groups, and language conversation and grammar classes to help with transitioning smoothly into the community. These classes are available as part of the UNA's regular programming and are available seasonally. To find out more, please email us at: [support@myuna.ca](mailto:support@myuna.ca).



# VOLUNTEERING AND COMMUNITY GRANTS



## Volunteer Opportunities

Many UNA community initiatives run on the tireless work of volunteers who contribute their time and expertise to ensure that we can hold a diverse array of events and initiatives, including clubs and long-term and short-term projects. There are many opportunities to get involved. If you are interested in volunteering, please visit [myuna.ca/volunteering](https://myuna.ca/volunteering).

## Youth Leadership Group

The UNA's youth volunteer program aims to build connections and support the young members of our community. Through this program, youth are able to connect, learn, share and grow while contributing positive things to the community. If you are between the ages 13-18 and are interested in joining the Youth Leadership Group, please visit [myuna.ca/volunteering](https://myuna.ca/volunteering).

## Community Grants

The UNA has partnered with UBC Inspired to provide small grants to motivated residents with project ideas that focus on community building. To apply, visit [inspired.ubc.ca/communitygrants](https://inspired.ubc.ca/communitygrants).



# UNA AND PARTNERS DIRECTORY

## UNA Main Office

202-5923 Berton Ave.

Vancouver, BC V6S 0B3

604.827.5158

reception@myuna.ca

myuna.ca

## Wesbrook Community Centre

3335 Webber Lane

Vancouver, BC V6S 0H3

604.822.4227

support@myuna.ca

## Old Barn Community Centre

6308 Thunderbird Blvd.

Vancouver, BC V6T 1Z4

604.827.4469

support@myuna.ca

## UNA Operations Department

*(For road works, parking, garbage, landscaping and snow removal)*

604.639.4567

operations@myuna.ca

parking@myuna.ca

## UNA Sustainability

*(For the Green Depot, community gardens and car charging stations)*

604.632.3269

greendepot@myuna.ca

communitygardens@myuna.ca



## Wesbrook Child Care Centre

3335 Webber Lane,

Vancouver, BC V6S 0H3

604.939.9622

ymcakidsclub@gvymca.ca

## Vista Point Child Care

5828 Thunderbird Blvd.

Vancouver, BC V6T 0B8

604.222.0552

vistapoint@gvymca.ca

### **UBC Aquatic Centre**

6080 Student Union Blvd.  
Vancouver, BC V6T 1Z1  
604.822.4501  
aquatic.centre@ubc.ca  
recreation.ubc.ca/aquatics

### **UBC Beaty**

#### **Biodiversity Museum**

2212 Main Mall, Vancouver,  
BC V6T 1Z4  
604.827.4955  
info@beatymuseum.ubc.ca  
beatymuseum.ubc.ca

### **UBC Botanical Garden**

6804 SW Marine Dr.  
Vancouver, BC V6T 1Z4  
604.822.4208  
garden.info@ubc.ca  
botanicalgarden.ubc.ca

### **Doug Mitchell Thunderbird**

#### **Sports Centre**

2555 Wesbrook Mall  
Vancouver, BC V6T 1Z3  
604.822.6121  
ice.rink@ubc.ca  
thunderbirdarena.ubc.ca

### **UBC Library**

#### **Vancouver Campus**

1961 East Mall  
Vancouver, BC V6T 1Z1  
604.822.2406  
library.contact@ubc.ca  
library.ubc.ca

### **Museum of Anthropology at UBC**

6393 NW Marine Dr.  
Vancouver, BC V6T 1Z2  
604.827.5932  
info@moa.ubc.ca  
moa.ubc.ca

### **UBC Student**

#### **Recreation Centre**

6000 Student Union Blvd.  
Vancouver, BC V6T 1Z1  
604.822.6000  
src.operations@ubc.ca  
sportfacilities.ubc.ca/src

### **UBC Tennis Centre**

6160 Thunderbird Blvd.  
Vancouver, BC V6T 1Z3  
604.822.2505  
tennis.centre@ubc.ca  
recreation.ubc.ca/tennis

### **Vancouver Public Library**

#### **West Point Grey Branch**

4566 West 10th Ave.  
Vancouver, BC V6R 2J1  
604.665.3982  
info@vpl.ca  
www.vpl.ca

### **RCMP**

#### **University Detachment**

2990 Wesbrook Mall  
Vancouver, BC V6T 2B7  
For Emergencies: Call 9-1-1  
604.224.1322



**University Neighbourhoods Association**

202-5923 Berton Ave., Vancouver, BC V6S 0B3

(604) 800-9865 • [support@myuna.ca](mailto:support@myuna.ca) • [myuna.ca](http://myuna.ca)

